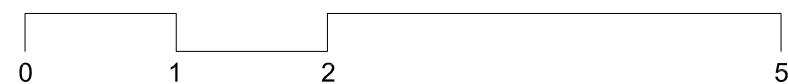
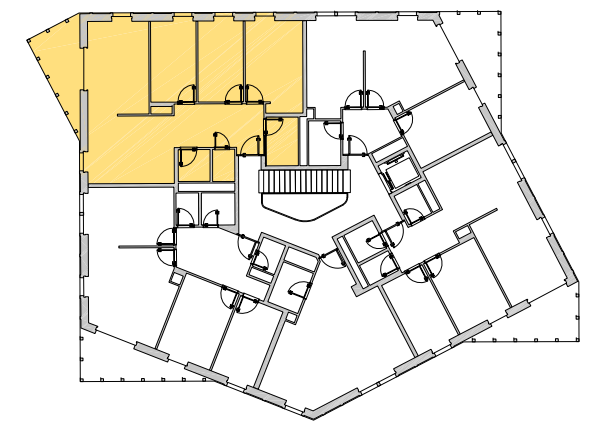
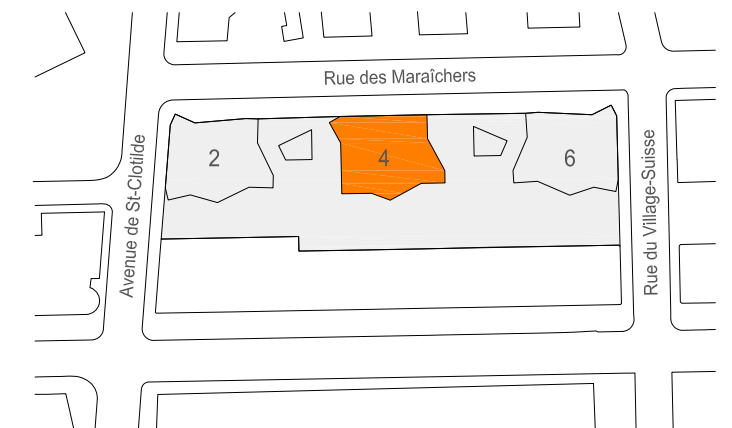
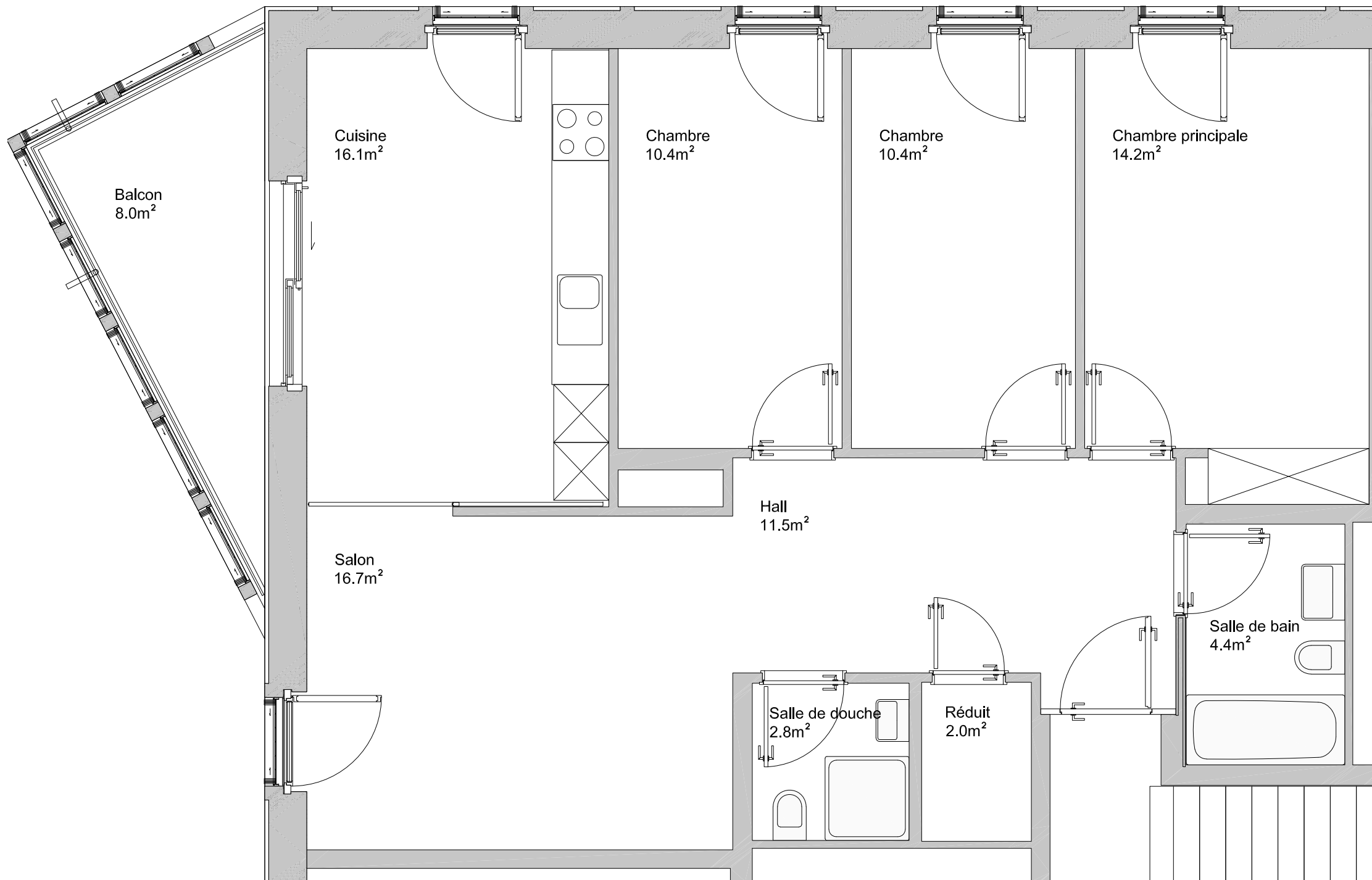


Rue des Maraîchers 4 1205 Genève

Appartements : 15, 25, 35, 45, 55, 65
 Pièces : 5 pièces
 Surface utile : 88,5 m²
 Etages : 1er, 2e, 3e, 4e, 5e, 6e



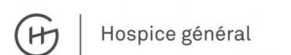
Echelle graphique, ne constitue pas un document contractuel

Consortium architectes DL-LP
 dl-c, designlab-construction sa EPFL / FAS / SIA
 lopes & périnet-marquet architectes EPFL Sàrl

Format : A3
 Date : 25.10.2022
 Indice : -



HOSPICE GÉNÉRAL
<https://www.hospicegeneral.ch/fr>
 Cours de Rive 12, 1204 Genève



RÉGIE BRUN
<http://www.regiebrun.ch/>
 Rue Sillem 6, 1207 Genève

